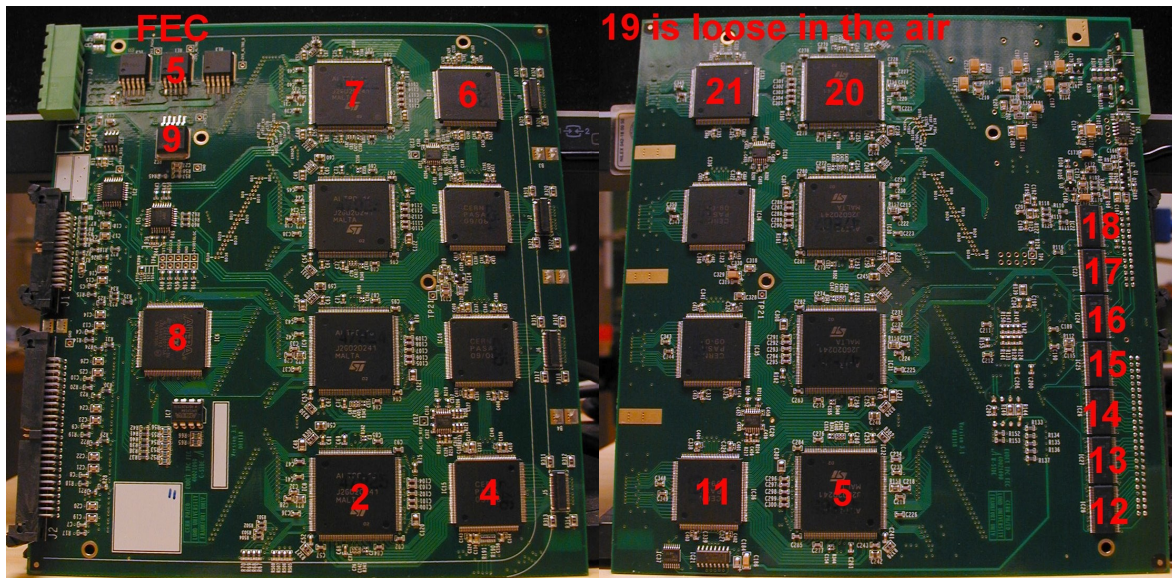


Test of cooling:

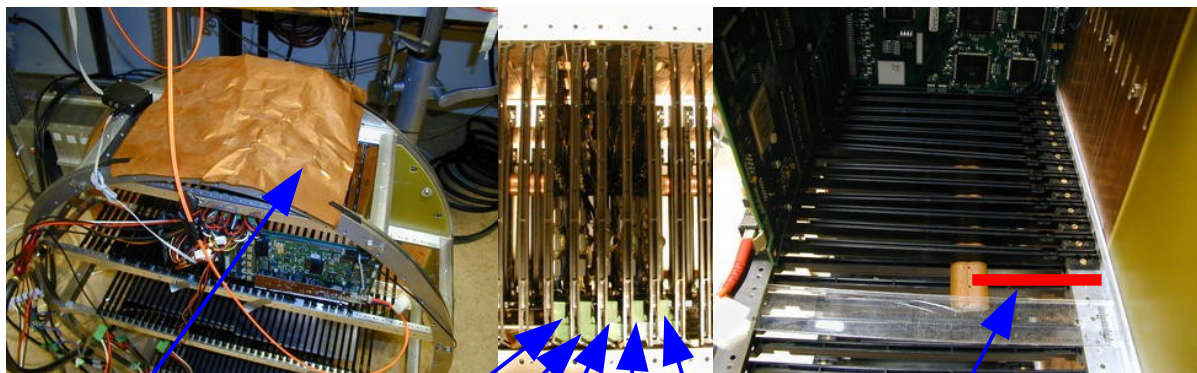
5 FECs used (75,76,5,78,74). FEC5 in the middle with extra temperature sensors mounted:

FRONT

BACK



The cooling plate was put in position 70 mm, measured from the front of FEC, and the temperature was measured:



Top cover

FEC#: 74

78

5

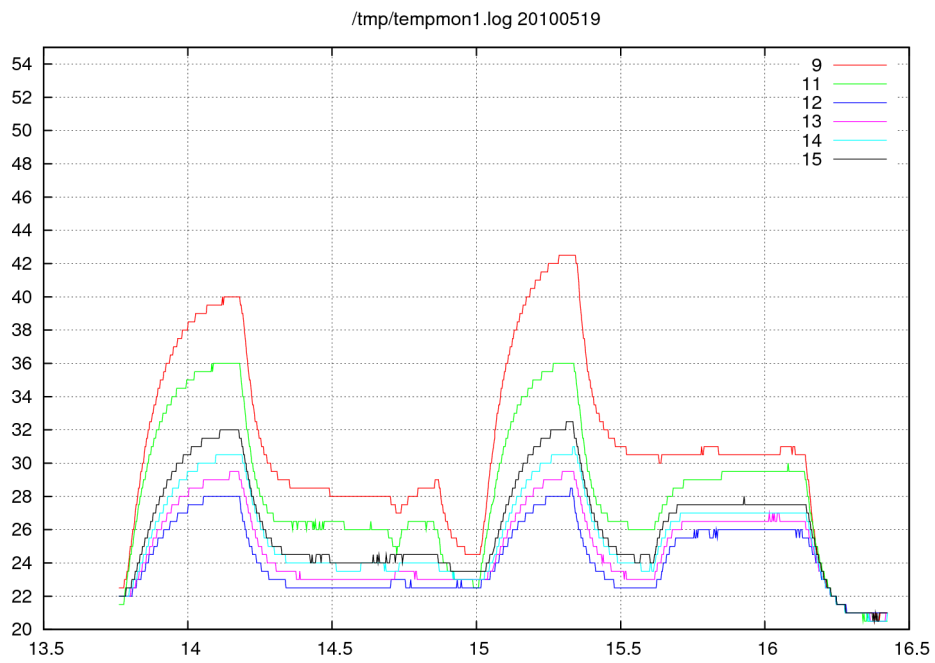
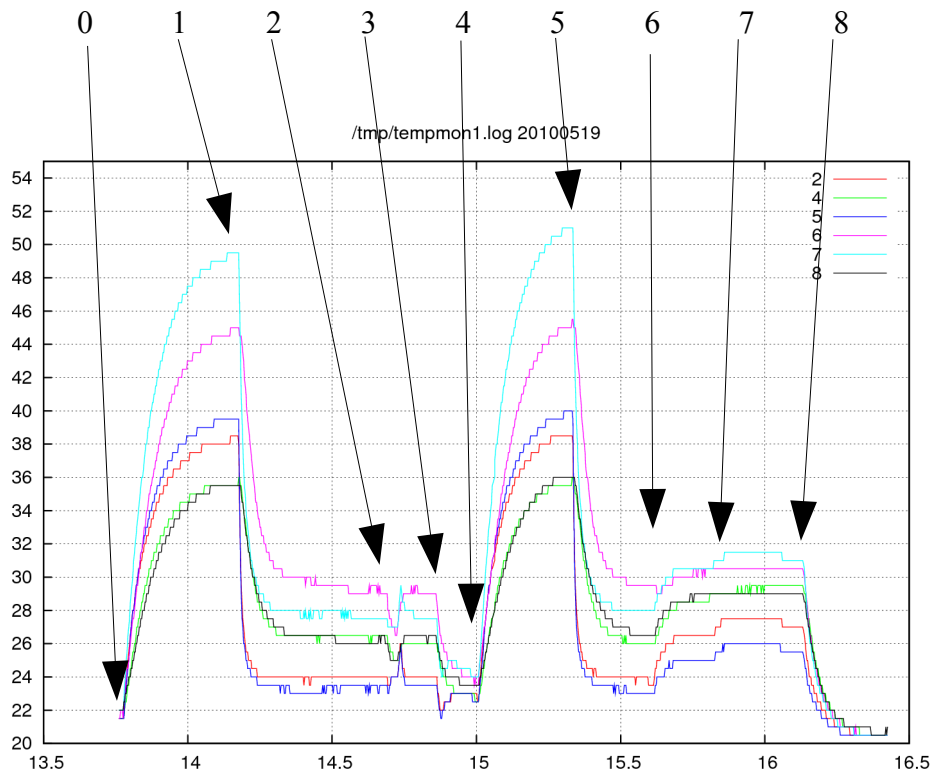
78

74

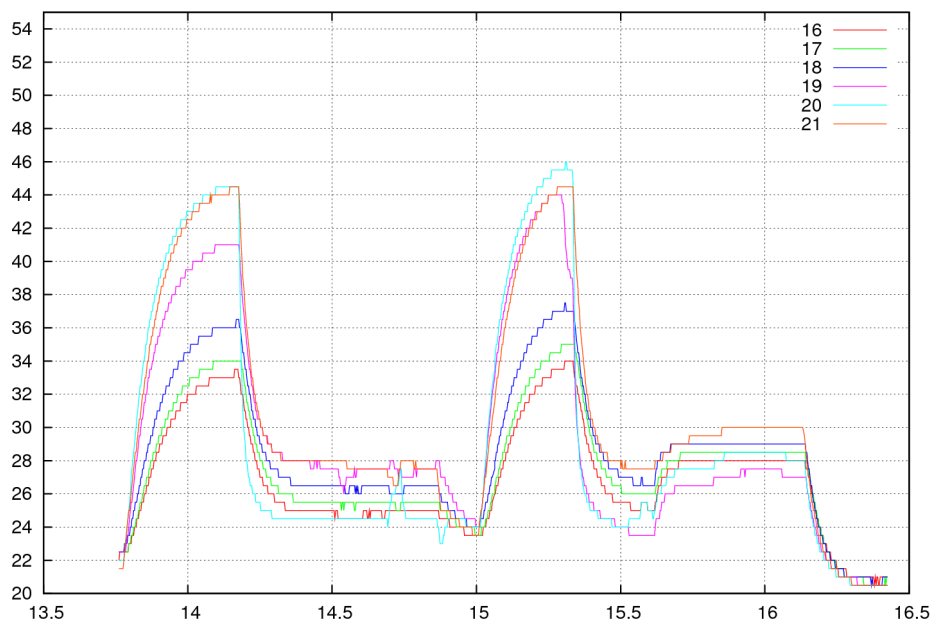
cooling plate position

Event sequence:

- 0 power on
- 1 Cooling on. 2 Bar, position 70mm
- 2 Investigate 2.5 V to Digital part - > too low
(3.3V drops to 2.8V in cables, and 2.5 V out from regulator)
change to 4.3, drops to 3.3V in cables, and 2.5V from regulator
- 3 power off
- 4 power on
- 5 cooling on
- 6 put on a "top cover"
- 7 put on "side cover"
- 8 power off, cooling is still on



/tmp/tempmon1.log 20100519



/tmp/tempmon1.log 20100519

