

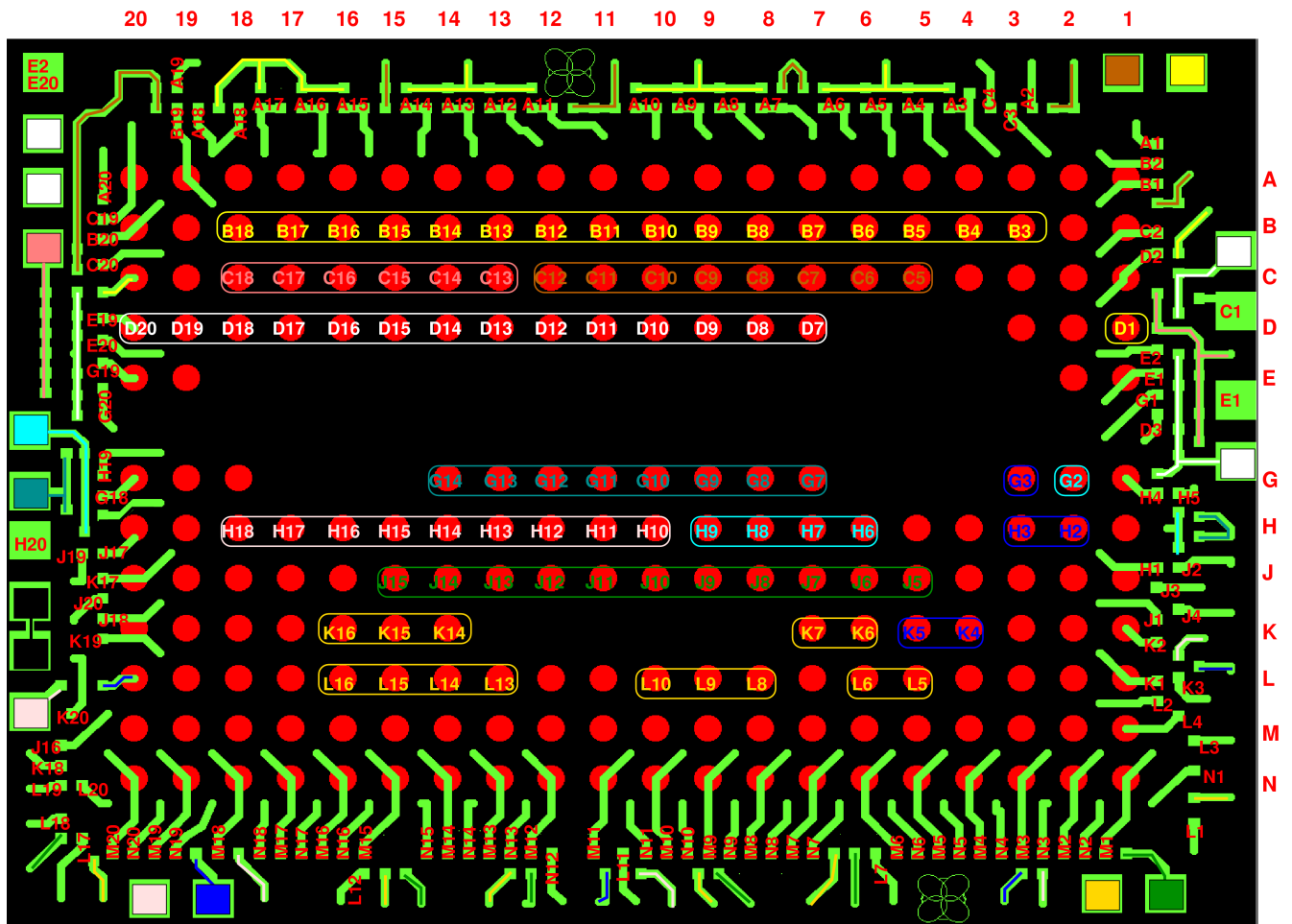
20	19	18	17	16	15	14	13	12	11	10	9	8	7	6	5	4	3	2	1		
Shap 1	Gain 1	In0	In1	In2	In3	In4	In5	In6	In7	In8	In9	In10	In11	In12	In13	In14	In15	Shut Down	Test Mode	A	
Shap 3	Gain 2	Pasa Gnd																Pasa TestP	Pasa TestN	B	
Polarity	Shap 2	AdcA Pow						Pasa Pow									Decay Bias	Pre-amp Mode	Adc TestN	RefN	C
AdcA Gnd																	Bias	Adc TestP			D
Vcm	Ref N																	Vcm	RefP		E
																					F
Cm Out1	RefP	Clk Aux				AdcD Pow												Dig Power		Cm Out2	G
Adc Clk	Clk Sel	Dig Gnd									AdcD Gnd				Guard 2	Guard 1			Chip A0		H
Chip A7	Chip A5	_rst	Chip A4	_cstb	IO Gnd											Chip A3	Chip A2	Chip A1	Adc Add1		J
_wr	_grst	_dolen	Chip A6	IO Power														_tms	Adc Add0	_trg	K
_err	_trsen	_trsf	_dstb					Scan mode	Rdo clk				Scan en				_ack	_ack en	_l2y	tstout	L
IO39	IO37	IO35	IO33	IO31	IO29	IO27	IO25	IO23	IO21	IO19	IO17	IO15	IO13	IO11	IO9	IO7	IO5	IO3	IO1		M
IO38	IO36	IO34	IO32	IO30	IO28	IO26	IO24	IO22	IO20	IO18	IO16	IO14	IO12	IO10	IO8	IO6	IO4	IO2	IO0		N

Table with ball numbering and power/ground on carrier.

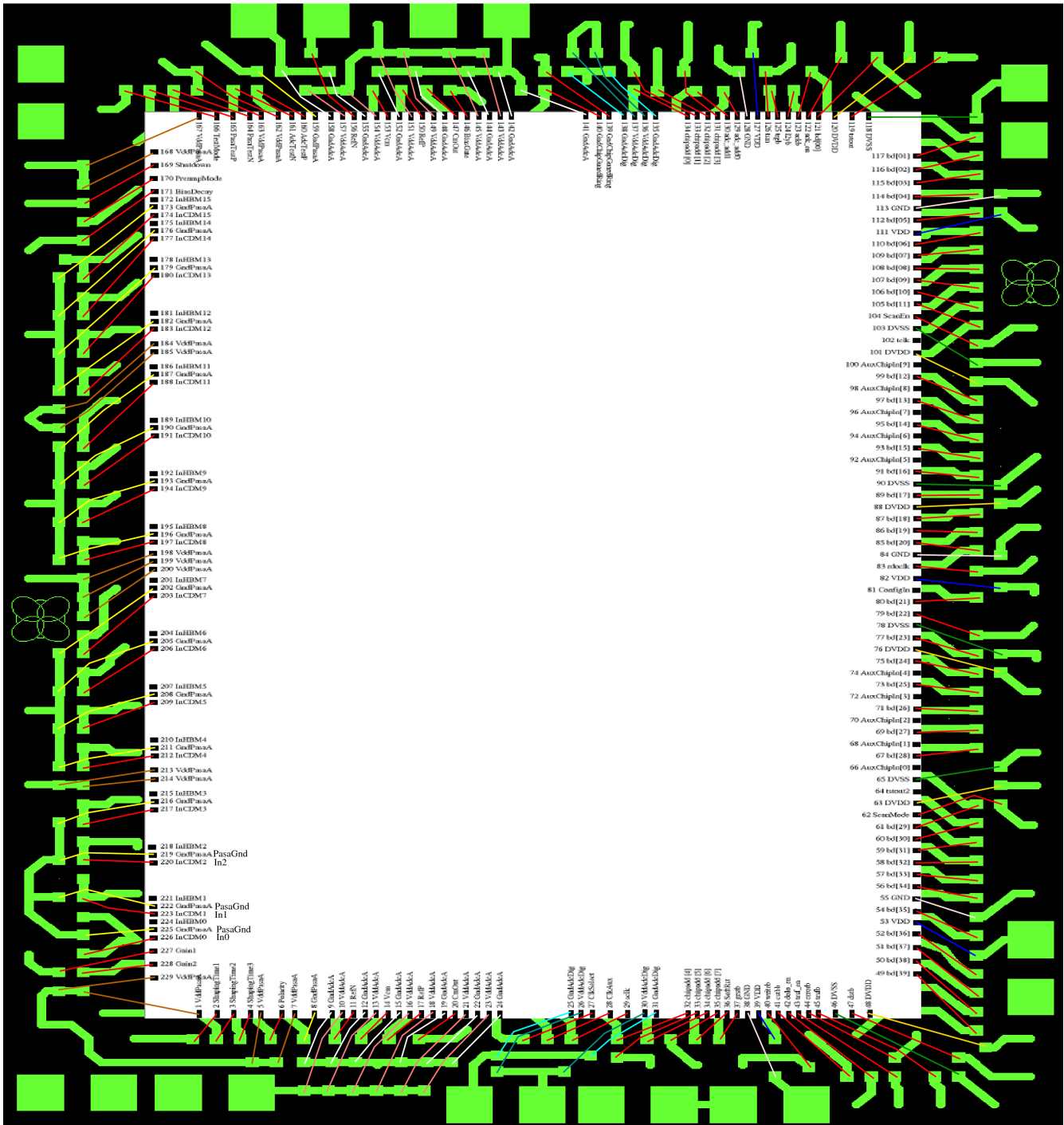
All views are as seen from the chip side of carrier.

20150130

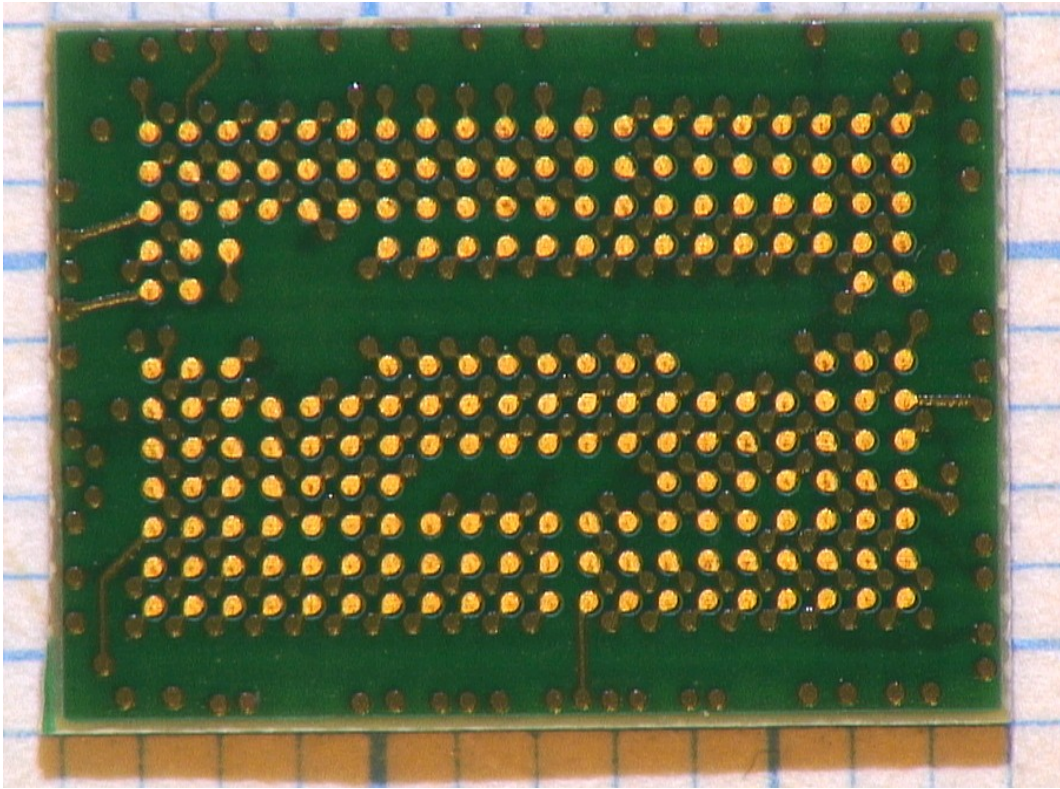
20150202 Added pictures of chipside and ballside



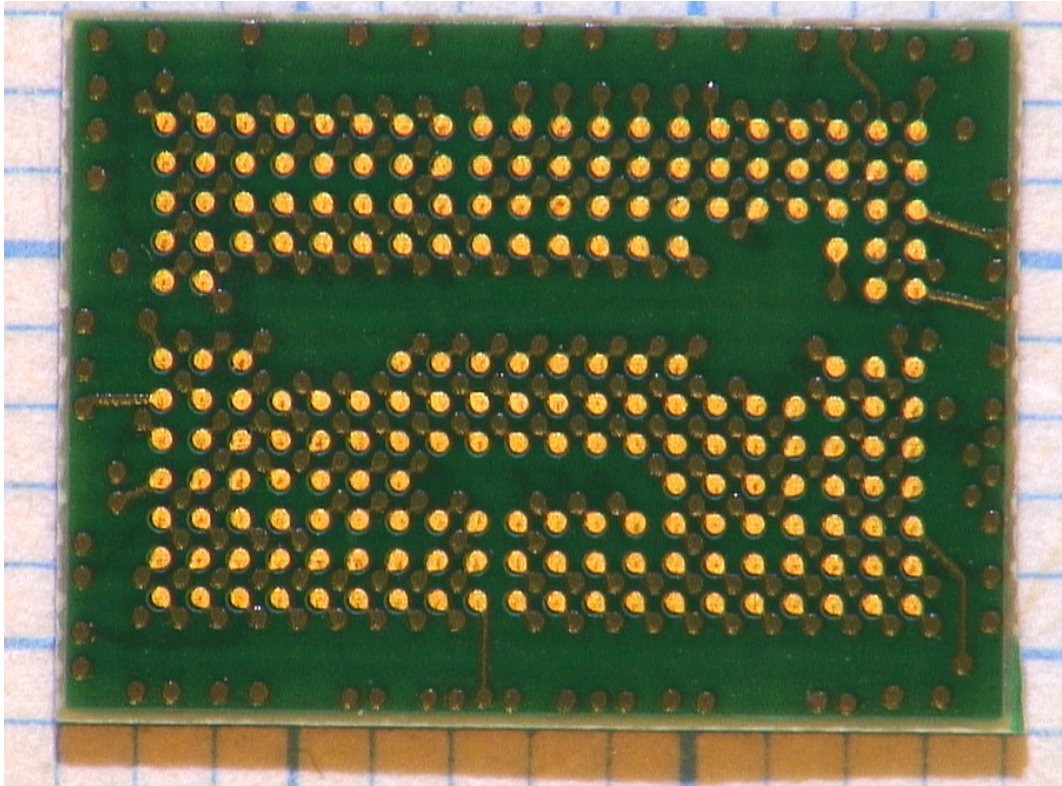
Ball number versus pad on carrier.
 Power and ground are colour coded according to the legend on last page.



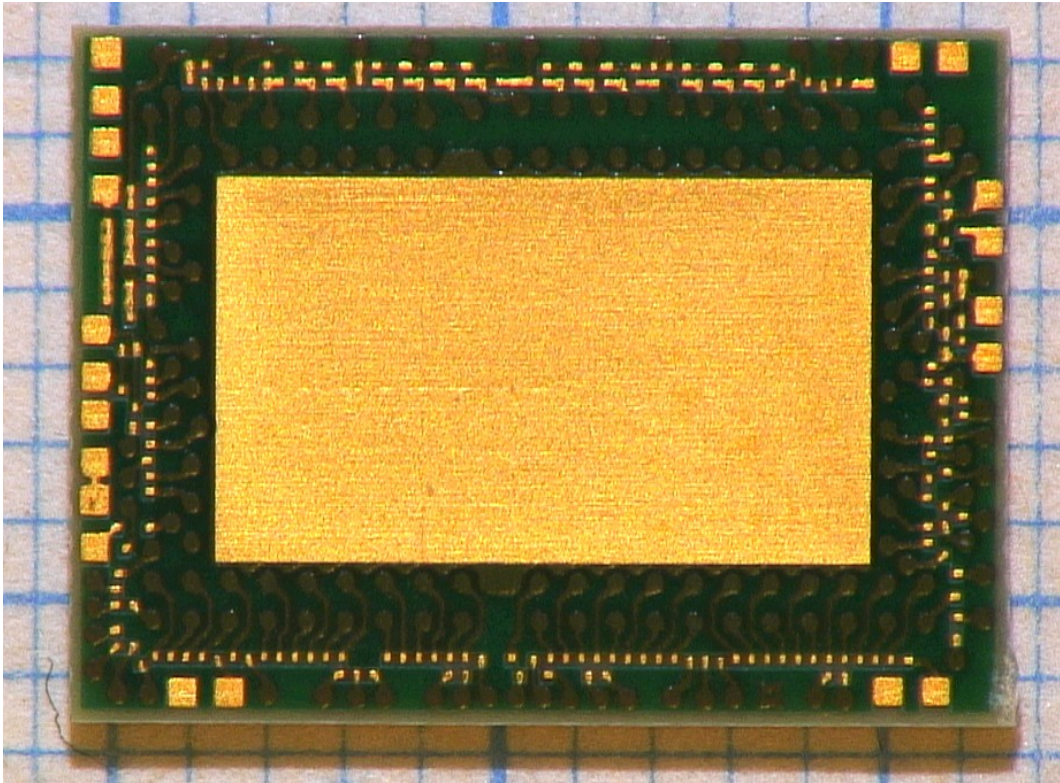
Relation between pad on carrier and pad on saltro.
 Power and ground are colour coded according to the legend on last page.
 Drawing is not exact in scale.




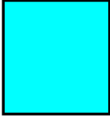
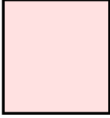
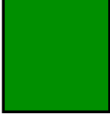
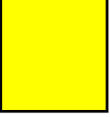
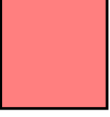




Ballside of carrier.



Ballside flipped of carrier



Chipside of carrier

	D7–D20	AdcAGnd
	G2,H6–H9	AdcDGnd
	H10–H18	DigGnd
	J5–J15	IoGnd
	D1,B3–B18	PasaGnd
	C13–C18	AdcAPower
	G7–G14	AdcDPower
	G3,H2–H3,K4–K5	DigPower
	K6–K7,K14–K16 L5–L6,L8–L10,L13–L16	IoPower
	C5–C12	PasaPower